

## HYDRAULIC COUPLERS



- ✓ Low flow and high flow couplers, from 6 to 40 litres/min.
- ✓ 700 and 1.000 bar couplers have 3/8"-18 NPT thread. 1.500 bar couplers have 1/4"-BSP thread.
- ✓ Male and Female couplers can be supplied separately.
- ✓ Steel dust cup available for AZ3120, AZ3140 and AZ3141 couplers.
- ✓ AZ3321, AZ3322, AZ3324, AZ3325, AZ3341, AZ3344 and AZ3345: ball quick couplers to guarantee easy and quick connection.
- ✓ AZ3120, AZ3140 and AZ3141: standard high flow couplers.
- ✓ AZ3220 and AZ3240: low flow couplers. Only used in Maintenance Sets.
- ✓ All standard cylinders are supplied with AZ3140 female coupler.
- ✓ All cutters are supplied with AZ3321 male ball coupler.



### WARNING

**Never disconnect the hose when the system is pressurized.  
Never exceed the maximum working pressure of the hose.**



Apply 2 rounds of Teflon around all 3/8" NPT threads of the system, in the thread direction, leaving the first thread uncovered to prevent the tape breaking and entering the hydraulic system. Torque: 80 Nm.



Performance under Pressure

HYDRAULIC COUPLERS



Type **AZ3**

Capacity **6 - 40 l/min**

Max. pressure **700 - 1.500 bar**

Steel dust cup available:  
AZ3144 for female couplers AZ3140 and AZ3141  
AZ3124 for male coupler AZ3120

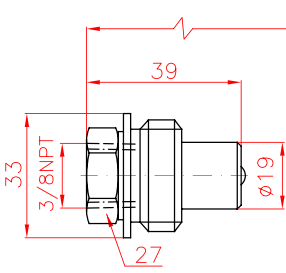


Plastic dust cup AZ3103 available  
to suit AZ3120, AZ3140 and AZ3141 couplers

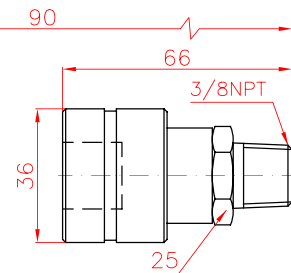


HIGH FLOW COUPLERS 700 BAR

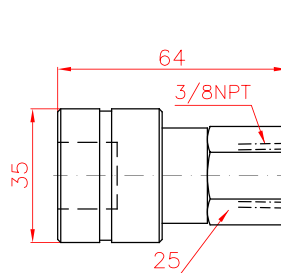
AZ3120



AZ3140

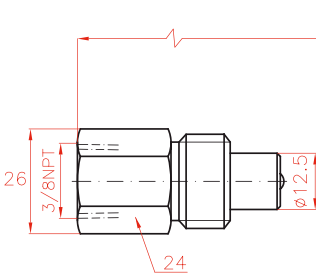


AZ3141

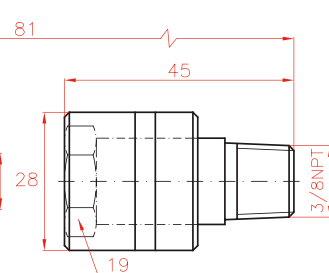


LOW FLOW COUPLERS 700 BAR

AZ3220

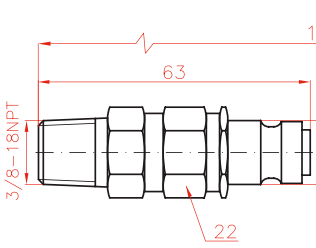


AZ3240

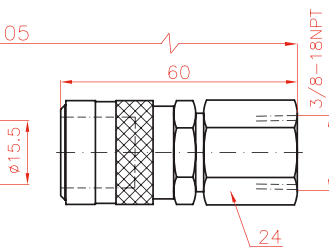


1.000 BAR BALL COUPLERS

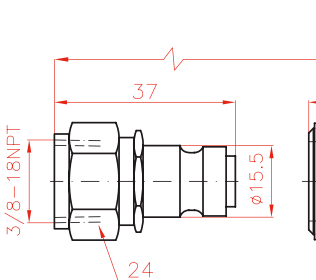
AZ3321



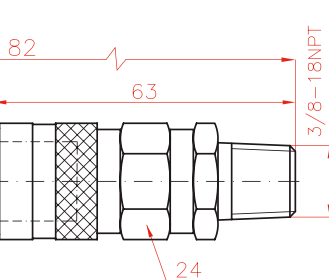
AZ3341



AZ3325

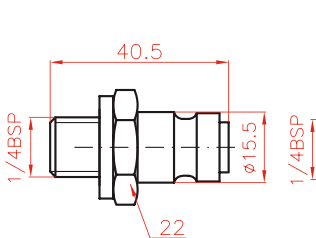


AZ3345

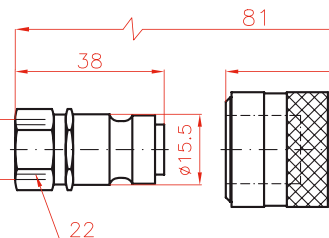


1.500 BAR BALL COUPLERS

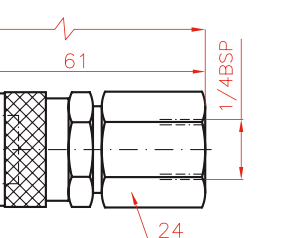
AZ3322



AZ3324



AZ3344



Flow l/min	Coupling	Model LARZEP	Thread	Pressure bar
40	Male	AZ3120	Female 3/8"NPT	700
	Female	AZ3140	Male 3/8"NPT	700
	Female	AZ3141	Female 3/8"NPT	700
7	Male	AZ3220	Female 3/8"NPT	700
	Female	AZ3240	Male 3/8"NPT	700
6	Male	AZ3321	Male 3/8"NPT	1.000
	Male	AZ3325	Female 3/8"NPT	1.000
	Female	AZ3341	Female 3/8"NPT	1.000
	Female	AZ3345	Male 3/8"NPT	1.000
6	Male	AZ3322	Male 1/4"BSP*	1.500
	Male	AZ3324	Female 1/4"BSP*	1.500
	Female	AZ3344	Female 1/4"BSP*	1.500

\*Cone 120°

AZ3321, AZ3322, AZ3324 and AZ3325 male couplers are connectable with AZ3341, AZ3344 and AZ3345 female couplers

Ref. AZ3322 without valve.

www.larzep.com

AZ3 ACCESSORIES